



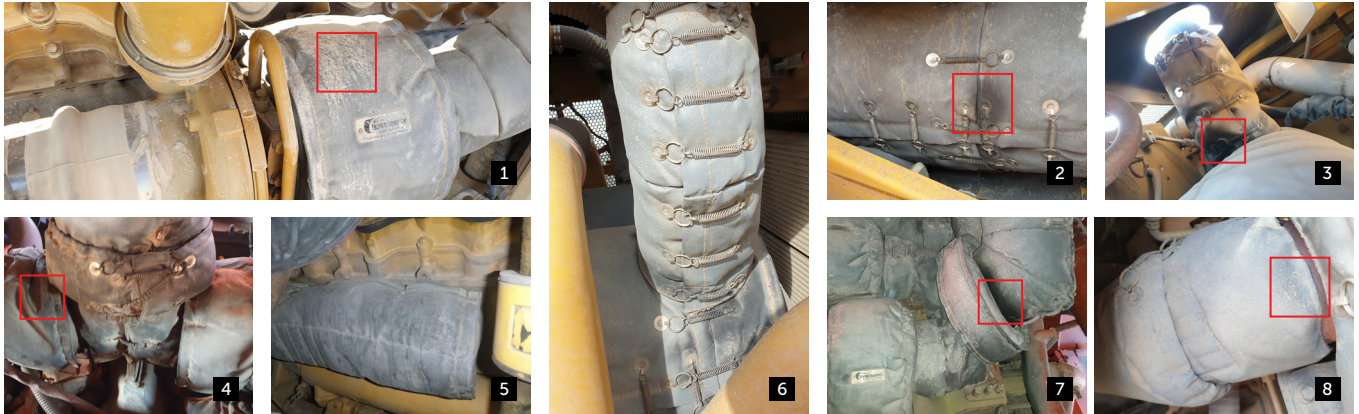
The following visual guide depicts examples of typical thermal blanket conditions. This sheet should be viewed alongside our service checklist on our Fitting Tips Cheat Sheet and/or Blankets Install & User Guide. Aletek recommends a monthly visual condition inspection as part of your ongoing fire mitigation strategy.

ACCEPTABLE CONDITION

ACTIONS – MONITOR/FIX AS NOTED

Blankets in acceptable condition may have cosmetic blemishes but are still able to serve their intended purpose. As these are a wear and tear product condition should be monitored monthly for future re-fitting or replacement.

SOILED BUT FUNCTIONAL



ABOVE Residual dirt build-up and low-level soot are typical (1,2,6). Investigate prominent soot on blankets for engine pipe leaks (3,7). Eliminate gaps and refit blankets (8) for a snug-fit and maximise coverage (4). Monitor blanket condition during ongoing maintenance.

AVERAGE CONDITION

ACTIONS – REPLACE WITHIN 6-MONTHS

Blankets in average condition should be monitored and replaced within 6-months. Issues such as missing springs or fitment issues should be resolved now. See our Fitting Tips cheat sheet and Install & User Guide for maintenance tips.

WORN – MONITOR CONDITION, REPLACE SOON

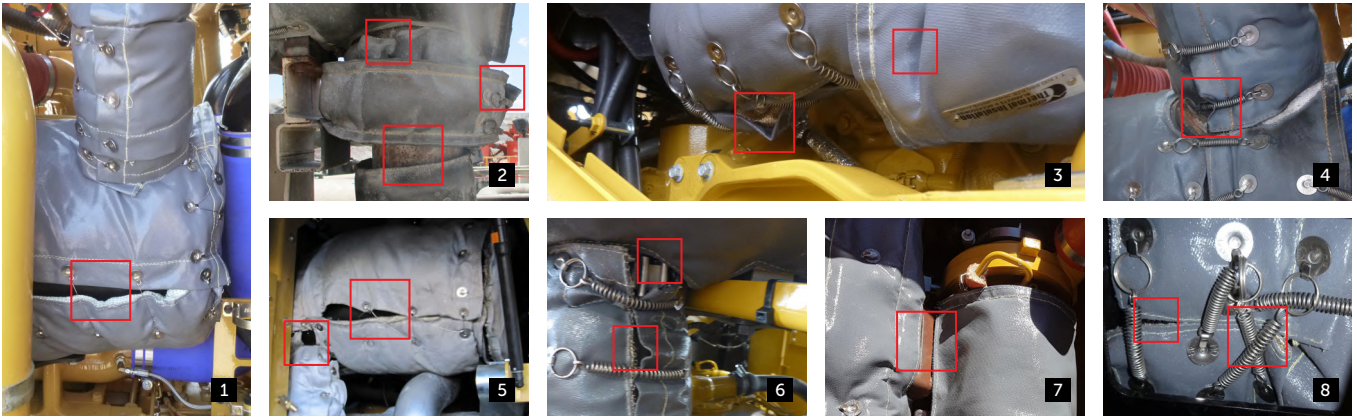


ABOVE Fix and refit blankets to avoid hot spots from gaps (1,6,8). Refit/replace stretched springs and loose tie-wire (4,6,8). Monitor and schedule replacement for wear (9), soot marks (2,3,8-11) and irreparable/loose fitments (8). Investigate burn marks for exhaust leaks (1,8).



GOOD CONDITION – FITMENT ISSUES

ACTIONS – FIX AS NOTED



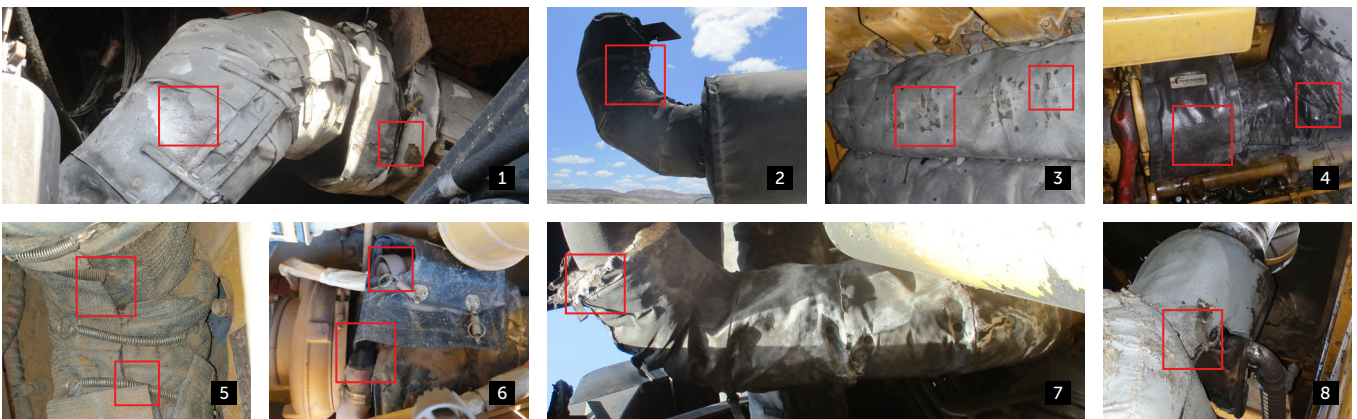
PHOTOS 1-8 Poor fitment (1,3,8), excessive gaps (2-5,7), and poor install techniques (8) create hot spots. Eliminate gaps and ensure blankets are snug-fitting and maximise coverage. Check springs are connected, tie-wires secured, and replace missing springs.

POOR CONDITION

ACTIONS – REPLACE/FIX NOW

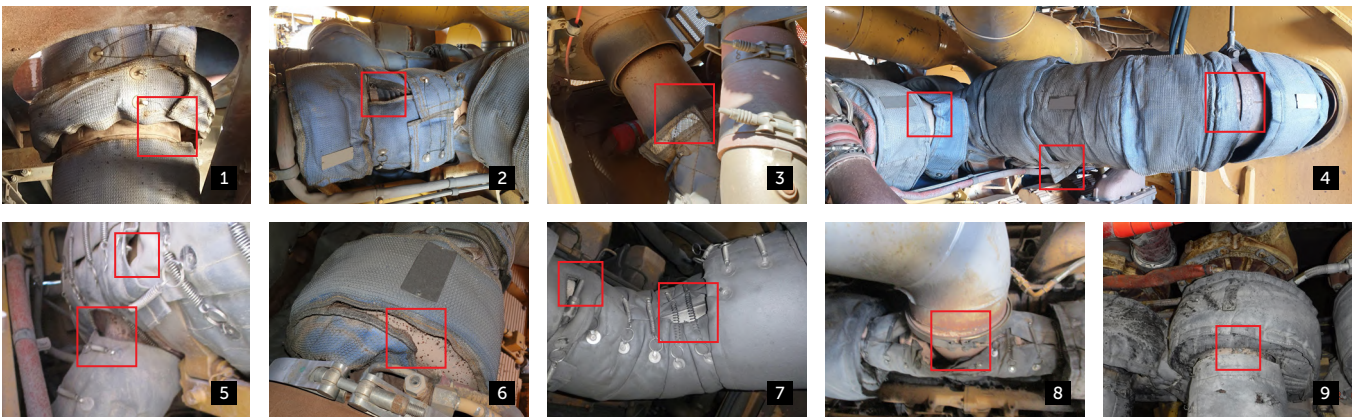
Blankets in poor condition should be fixed/replaced now. Rectify poor fitments immediately. If blankets are soaked in oil, diesel or coolant it is almost impossible to remove all traces of contaminants – replace now.

DAMAGED – REPLACE NOW



PHOTOS 1-8 Replace blankets that are damaged (1,7), oil/fuel contaminated (4,7), excessively worn (7,8) and poor fitting (5). Replace damaged sections and contaminated sections (by flammable fluids) that can't be sufficiently cleaned.

POOR FIT/DAMAGED – FIX NOW



PHOTOS 1-9 Assess poor fitment alongside blanket condition. Fix gaps (5,7) and assess if fit-for-purpose. Replace overworn and baggy-fit blankets (2,4,8). Replace damaged blankets and missing sections (3,6,9). Consider upgrading tie-wire to springs for a snug fit (1,2).

